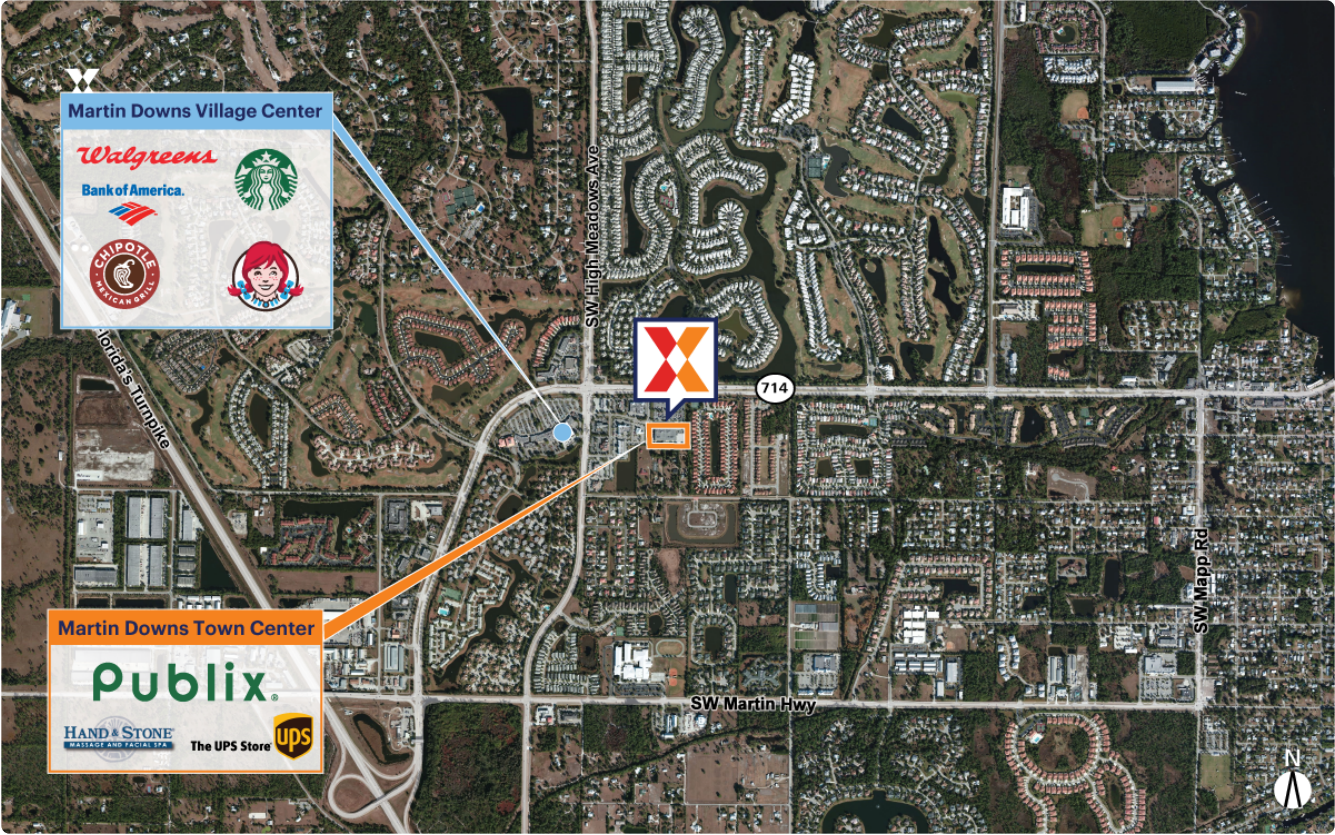


# Martin Downs Town Center

2750 SW Martin Downs Blvd | Palm City, FL 34990

Martin County Port St. Lucie, FL 64,546 Sq Ft

271713, -80.2907



Demographics	1 Mile	3 Miles	5 Miles
Population	7,921	35,133	86,661
Daytime Pop.	9,123	39,116	104,146
Households	3,584	15,211	36,707
Income	\$124,890	\$153,082	\$135,493

Source: Synergos Technologies, Inc. 2024

- Market-dominant Publix-anchored center in the heart of Palm City
- Proven tenant stability with more than 50% of tenants leasing their space for 18+ years
- Strong daytime population of nearly 40K+ people within a 3-mile radius
- Located less than 5 miles from the new 4,000-unit housing development, Newfield, currently under construction (Mattamy Homes 2024)
- Direct access to Florida Turnpike and I-95 with 50K+ vehicles daily and 78K+ vehicles daily, respectively (Kalibrate 2021)

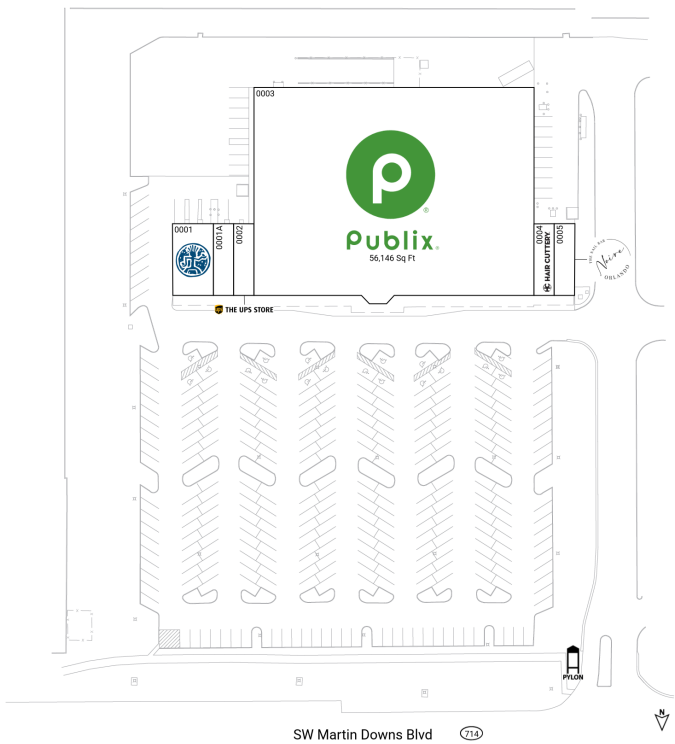


# Martin Downs Town Center

2750 SW Martin Downs Blvd | Palm City, FL 34990

Martin County Port St. Lucie, FL 64,546 Sq Ft

271713, -80.2907



## Current Tenants Space size listed in square feet

0001	Hand & Stone Massage and Facial Spa	2,800
0001A	Publix Liquor	1,400
0002	The UPS Store	1,400
0003	Publix	56,146
0004	Hair Cuttery	1,400
0005	Noire the Nail Bar	1,400

This site plan is for illustrative and information purposes only, showing the general layout of the shopping center; and is not a legal survey. Brixmor makes no representation or warranty that the shopping center is exactly as depicted as site conditions and tenant mix are subject to change over time.

1834

